
DPM

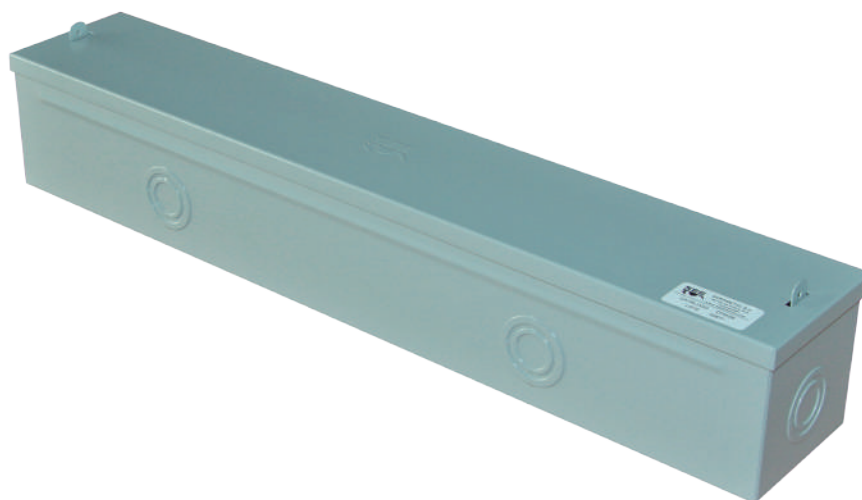
Meter Wireway



SERPIMETAL

The background of the lower half of the page is a faded, grayscale image of a factory interior. It shows various pieces of industrial machinery, including what appears to be a large metalworking machine with a control panel, and structural elements like beams and ladders. The lighting is bright, creating reflections on the floor.

DPM METER WIREWAY



DESCRIPTION

The DPM is a set of wireways designed considering the UL50/UL50E norms to provide protection against dust and dirt. It is used on multiple domestic meter connections, making the routing easy and protecting the electric conductors.

These wireways are made of cold rolled steel, using CNC fabrication technology and finished with polyester RAL7042 grey powder coating, providing UV resistance color resistance in domestic or industrial environments.

The sizes range from 2 meters to 5 meters with conduit tubing connections from $\varnothing 1/2''$ to $\varnothing 1 1/4''$.

DIMENSIONAL TABLE

MODEL	DIMENSIONS (mm)			METAL GAUGE	ELECTRICITY METERS SOCKET
	A	B	C		
DPM2M	100	100	600	20 (0,9 mm)	2
DPM3M	100	100	900	20 (0,9 mm)	3
DPM4M	100	100	1190	18 (1,2 mm)	4
DPM5M	100	100	1490	18 (1,2 mm)	5

BLUEPRINTS

